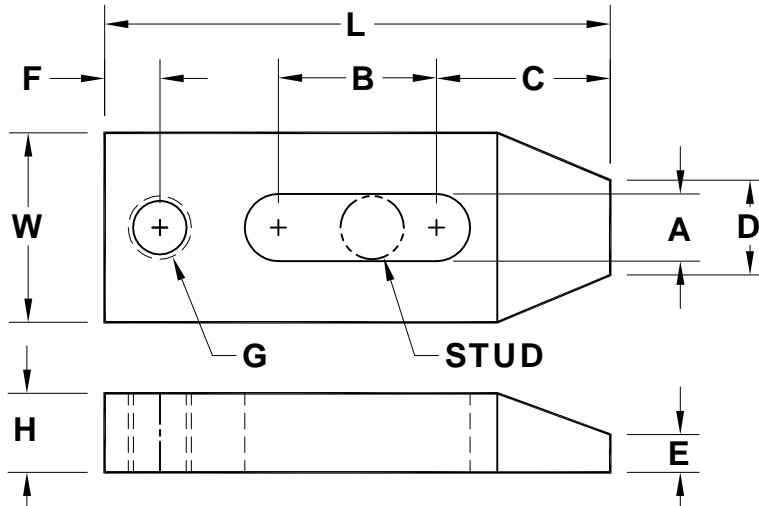


SADLAK MANUFACTURING LLC

Nadeau Industrial Park Unit 7 P.O.Box 207 Coventry, CT 06238 Tel (860) 742-0227 Fax (860) 742-4244 website: clampstrap.com email: sales@sadlak.com

TAPER-NOSE CLAMP STRAP SIZE CHART

Tech. Sheet #2



SIZE #	P/N*	STUD	H HEIGHT	W WIDTH	L LENGTH	A	B	C	D	E	F	G
60	60-111	1/2	5/8	1 1/2	4	.53	1.25	1.38	.75	.30	.44	1/2-13 UNC
61	61-111	1/2	5/8	1 1/2	3 1/4	.53	.50	1.38	.75	.30	.44	1/2-13 UNC
64	64-111	5/8	5/8	1 1/2	4	.66	1.25	1.38	.75	.30	.44	5/8-11 UNC
65	65-111	5/8	5/8	1 1/2	3 1/4	.66	.50	1.38	.75	.30	.44	5/8-11 UNC
70	70-111	1/2	3/4	1 1/2	5	.53	1.50	1.50	.75	.43	.56	1/2-13 UNC
71	71-111	1/2	3/4	1 1/2	3 3/4	.53	.50	1.50	.75	.43	.56	1/2-13 UNC
74	74-111	5/8	3/4	1 1/2	5	.66	1.50	1.50	.75	.43	.56	5/8-11 UNC
75	75-111	5/8	3/4	1 1/2	3 3/4	.66	.50	1.50	.75	.43	.56	5/8-11 UNC
78	78-111	3/4	3/4	1 1/2	5	.78	1.50	1.50	.75	.43	.56	3/4-10 UNC
79	79-111	3/4	3/4	1 1/2	3 3/4	.78	.50	1.50	.75	.43	.56	3/4-10 UNC
100	100-111	1/2	1"	1 1/2	6	.53	1.75	1.50	.75	.50	.56	1/2-13 UNC
101	101-111	1/2	1"	1 1/2	4 1/2	.53	1.00	1.50	.75	.50	.56	1/2-13 UNC
104	104-111	5/8	1"	1 1/2	6	.66	1.75	1.50	.75	.50	.56	5/8-11 UNC
105	105-111	5/8	1"	1 1/2	4 1/2	.66	1.00	1.50	.75	.50	.56	5/8-11 UNC
108	108-111	3/4	1"	1 1/2	6	.78	1.75	1.50	.75	.50	.56	3/4-10 UNC
109	109-111	3/4	1"	1 1/2	4 1/2	.78	1.00	1.50	.75	.50	.56	3/4-10 UNC

*PART NO. SYSTEM

STANDARD: ##-111 = (1) 1018 STEEL, (1) BLACK OXIDE, (1) CASE HARDENED

└─SIZE

SPECIALS:

##-300 = (3) STAINLESS STEEL 304, (0) MILL FINISH, (0) ANNEALED

##-400 = (4) BRASS 360, (0) MILL FINISH, (0) ANNEALED

##-500 = (5) ALUM 6061-T6, (0) MILL FINISH, (0) T6-HARDNESS

##-600 = (6) BLACK DELRIN, (0) MILL FINISH, (0) NONE