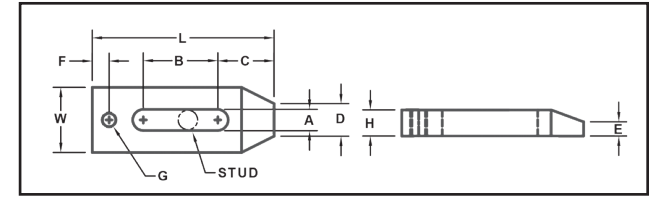




CLAMPSTRAP.COM

Manufactured by SADLAK Manufacturing LLC • **MADE IN USA**
 PO Box 207, Coventry, CT 06238 • Sales@clampstrap.com • 860-742-0227



TAPER NOSE CLAMP STRAP

PART #	STUD	W- Width	H - Height	L - Length	A	B	C	D	E	F	G	PRICE	Distributor
01-111	#10 (3/16)	0.50	0.125	1.25	0.21	0.30	0.48	0.20	0.06	0.15	#10-32 UNF	\$4.90	\$3.68
02-111	#10 (3/16)	0.50	0.1875	1.25	0.21	0.30	0.48	0.20	0.10	0.15	#10-32 UNF	\$5.03	\$3.77
05-111	#10 (3/16)	0.50	0.1875	1.375	0.21	0.44	0.51	0.20	0.13	0.175	#10-32 UNF	\$5.22	\$3.92
10-111	0.25	0.75	0.250	1.75	0.28	0.54	0.64	0.30	0.115	0.205	1/4-20 UNC	\$5.89	\$4.42
20-111	0.3125	0.75	0.375	2.50	0.34	0.96	0.82	0.35	0.19	0.26	1/4-20 UNC	\$8.42	\$6.31
21-111	0.25	0.75	0.375	2.50	0.28	0.96	0.82	0.35	0.19	0.26	1/4-20 UNC	\$8.25	\$6.18
30-111	0.375	1	0.50	3	0.41	1.22	0.93	0.42	0.30	0.35	5/16-18 UNC	\$11.05	\$8.29
31-111	0.375	1	0.50	2	0.41	0.37	0.83	0.42	0.30	0.30	5/16-18 UNC	\$10.69	\$8.02
40-111	0.375	1.25	0.50	3.50	0.41	1.44	1.08	0.63	0.27	0.32	5/16-18 UNC	\$13.73	\$10.30
41-111	0.375	1.25	0.50	2.50	0.41	0.80	0.90	0.63	0.27	0.28	5/16-18 UNC	\$12.59	\$9.44
50-111	0.50	1.50	0.50	4	0.53	1.61	1.38	0.75	0.25	0.38	3/8-16 UNC	\$17.48	\$13.11
51-111	0.50	1.50	0.50	3	0.53	0.97	1.07	0.75	0.25	0.30	3/8-16 UNC	\$16.27	\$12.21
60-111	0.50	1.50	0.625	4	0.53	1.25	1.38	0.75	0.30	0.44	1/2-13 UNC	\$18.77	\$14.07
61-111	0.50	1.50	0.625	3.25	0.53	0.50	1.38	0.75	0.30	0.44	1/2-13 UNC	\$17.46	\$13.09
64-111	0.625	1.50	0.625	4	0.66	1.25	1.38	0.75	0.30	0.44	5/8-11 UNC	\$18.77	\$14.07
65-111	0.625	1.50	0.625	3.25	0.66	0.50	1.38	0.75	0.30	0.44	5/8-11 UNC	\$17.46	\$13.09
70-111	0.50	1.50	0.75	5	0.53	1.50	1.50	0.75	0.43	0.56	1/2-13 UNC	\$21.94	\$16.46
71-111	0.50	1.50	0.75	3.75	0.53	0.50	1.50	0.75	0.43	0.56	1/2-13 UNC	\$19.45	\$14.58
74-111	0.625	1.50	0.75	5	0.66	1.50	1.50	0.75	0.43	0.56	5/8-11 UNC	\$21.86	\$16.40
75-111	0.625	1.50	0.75	3.75	0.66	0.50	1.50	0.75	0.43	0.56	5/8-11 UNC	\$19.45	\$14.58
78-111	0.75	1.50	0.75	5	0.78	1.50	1.50	0.75	0.43	0.56	3/4-10 UNC	\$21.86	\$16.40
79-111	0.75	1.50	0.75	3.75	0.78	0.50	1.50	0.75	0.43	0.56	3/4-10 UNC	\$19.45	\$14.58
100-111	0.50	1.50	1	6	0.53	1.75	1.50	0.75	0.50	0.56	1/2-13 UNC	\$26.09	\$19.57
101-111	0.50	1.50	1	4.50	0.53	1.00	1.50	0.75	0.50	0.56	1/2-13 UNC	\$22.61	\$16.95
104-111	0.625	1.50	1	6	0.66	1.75	1.50	0.75	0.50	0.56	5/8-11 UNC	\$26.03	\$19.53
105-111	0.625	1.50	1	4.50	0.66	1.00	1.50	0.75	0.50	0.56	5/8-11 UNC	\$22.61	\$16.95
108-111	0.75	1.50	1	6	0.66	1.75	1.50	0.75	0.50	0.56	3/4-10 UNC	\$26.27	\$19.71
109-111	0.75	1.50	1	4.50	0.66	1	1.50	0.75	0.50	0.56	3/4-10 UNC	\$22.61	\$16.95

MADE FROM 1018 STEEL, CASE HARDENED AND BLACK OXIDE COATED

Rev. 1009019