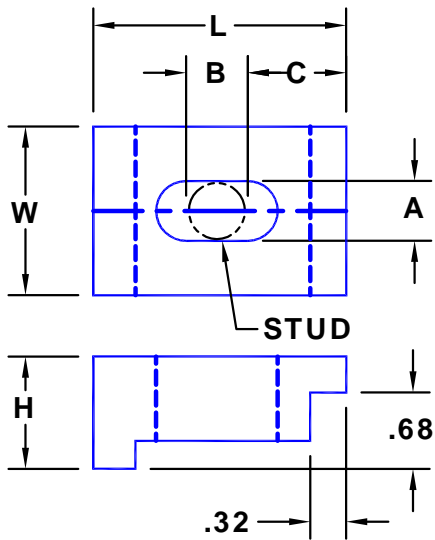


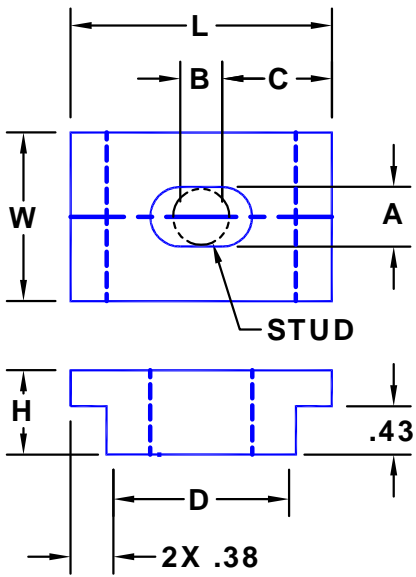
# SADLAK MANUFACTURING LLC

Nadeau Industrial Park Unit 7 P.O.Box 207 Coventry, CT 06238 Tel (860) 742-0227 Fax (860) 742-4244 website: clampstrap.com email: sales@sadlak.com

## KURT VISE CLAMP STRAPS Tech. Sheet #4



P/N*	STUD	H HEIGHT	W WIDTH	L LENGTH	A	B	C
KRT-200-111	1/2	1	1 1/2	2	.53	.30	.88
KRT-201-111	1/2	1	1 1/2	3	.53	1.25	.88
KRT-204-111	5/8	1	1 1/2	2	.66	.30	.88
KRT-205-111	5/8	1	1 1/2	3	.66	1.25	.88



P/N*	STUD	H HEIGHT	W WIDTH	L LENGTH	A	B	C	D	E** CENTER DISTANCE DUAL KURT VISES
KRT-210-111	1/2	3/4	1 1/2	1 1/2	Ø.53	-	.75	.74	9
KRT-215-111	5/8	3/4	1 1/2	1 1/2	Ø.66	-	.75	.74	9
KRT-220-111	1/2	3/4	1 1/2	2	Ø.53	-	1	1.24	9 1/2
KRT-225-111	5/8	3/4	1 1/2	2	Ø.66	-	1	1.24	9 1/2
KRT-230-111	1/2	3/4	1 1/2	2 5/16	.53	.375	.97	1.55	10
KRT-235-111	5/8	3/4	1 1/2	2 5/16	.66	.375	.97	1.55	10
KRT-240-111	1/2	3/4	1 1/2	3	.53	.75	1.13	2.24	10 5/8
KRT-245-111	5/8	3/4	1 1/2	3	.66	.75	1.13	2.24	10 5/8

\* PART NO. SYSTEM

STANDARD: KRT-###-111 = (1) 1018 STEEL, (1) BLACK OXIDE, (1) CASE HARDENED  
L SIZE

\*\* FOR DIM 'E' REFERENCE TECH. SHEET #5 FOR DUAL KURT VISE CENTER DISTANCE