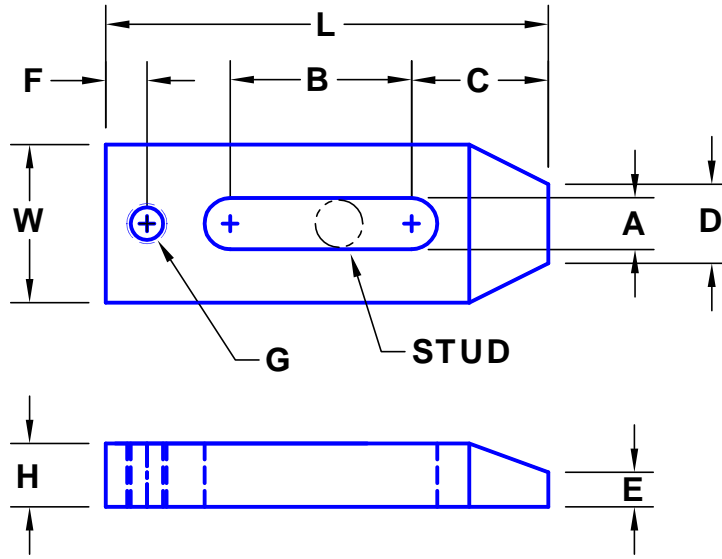


SADLAK MANUFACTURING LLC

Nadeau Industrial Park Unit 7 P.O.Box 207 Coventry, CT 06238 Tel (860) 742-0227 Fax (860) 742-4244 website: clampstrap.com email: sales@sadlak.com

TAPER-NOSE CLAMP STRAP SIZE CHART Tech. Sheet #1



SIZE #	P/N*	STUD	H HEIGHT	W WIDTH	L LENGTH	A	B	C	D	E	F	G
01	01-111	#10 (3/16)	1/8	1/2	1 1/4	.21	.30	.48	.20	.06	.150	#10-32 UNF
02	02-111	#10 (3/16)	3/16	1/2	1 1/4	.21	.30	.48	.20	.10	.150	#10-32 UNF
05	05-111	#10 (3/16)	1/4	1/2	1 3/8	.21	.44	.51	.20	.13	.175	#10-32 UNF
10	10-111	1/4	1/4	3/4	1 3/4	.28	.54	.64	.30	.115	.205	1/4-20 UNC
20	20-111	5/16	3/8	3/4	2 1/2	.34	.96	.82	.35	.19	.26	1/4-20 UNC
21	21-111	1/4	3/8	3/4	2 1/2	.28	.96	.82	.35	.19	.26	1/4-20 UNC
30	30-111	3/8	1/2	1	3	.41	1.22	.93	.42	.30	.35	5/16-18 UNC
31	31-111	3/8	1/2	1	2	.41	.37	.83	.42	.30	.30	5/16-18 UNC
40	40-111	3/8	1/2	1 1/4	3 1/2	.41	1.44	1.08	.63	.27	.32	5/16-18 UNC
41	41-111	3/8	1/2	1 1/4	2 1/2	.41	.80	.90	.63	.27	.28	5/16-18 UNC
50	50-111	1/2	1/2	1 1/2	4	.53	1.61	1.38	.75	.25	.38	3/8-16 UNC
51	51-111	1/2	1/2	1 1/2	3	.53	.97	1.07	.75	.25	.30	3/8-16 UNC

*PART NO. SYSTEM

STANDARD: ##-111 = (1) 1018 STEEL, (1) BLACK OXIDE, (1) CASE HARDENED

└─ SIZE

SPECIALS:

##-300 = (3) STAINLESS STEEL 304, (0) MILL FINISH, (0) ANNEALED

##-400 = (4) BRASS 360, (0) MILL FINISH, (0) ANNEALED

##-500 = (5) ALUM 6061-T6, (0) MILL FINISH, (0) T6-HARDNESS

##-600 = (6) BLACK DELRIN, (0) MILL FINISH, (0) NONE